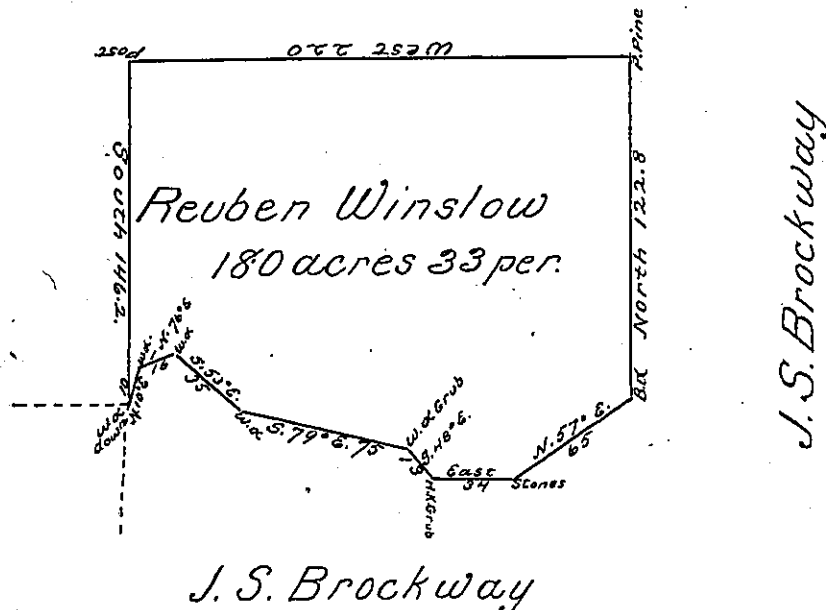


No. 5026.

R & E. C. Winslow



J. S. Brockway

Situated in Benezet Township Elk County containing one Hundred & Eighty acres & Thirty three perches and the usual allowance of 6 perch for Roads &c. Surveyed this 12th. day of November 1855 by virtue of a Warrant dated the 8th. day of November 1855.

Georg F. Schaefer  
Surveyor for Elk Co.

J. J. Porter, Brawley Esqr. }  
Surveyor General }

IN TESTIMONY that the above is a copy of the original remaining on file in the Department of Internal Affairs of Pennsylvania, made conformably to an Act of Assembly approved the 16th day of February, 1833, I have hereunto set my Hand and caused the Seal of said Department to be affixed at Harrisburg, this sixth day of February 1900

*James W. Latta*  
Secretary of Internal Affairs.